

JOHN BRAY & SONS



6 Marianne Park, Ashburnham Road
, Hastings, TN35 5PT

£1,800 Per Month



6 Marianne Park, Hastings, TN35 5PT

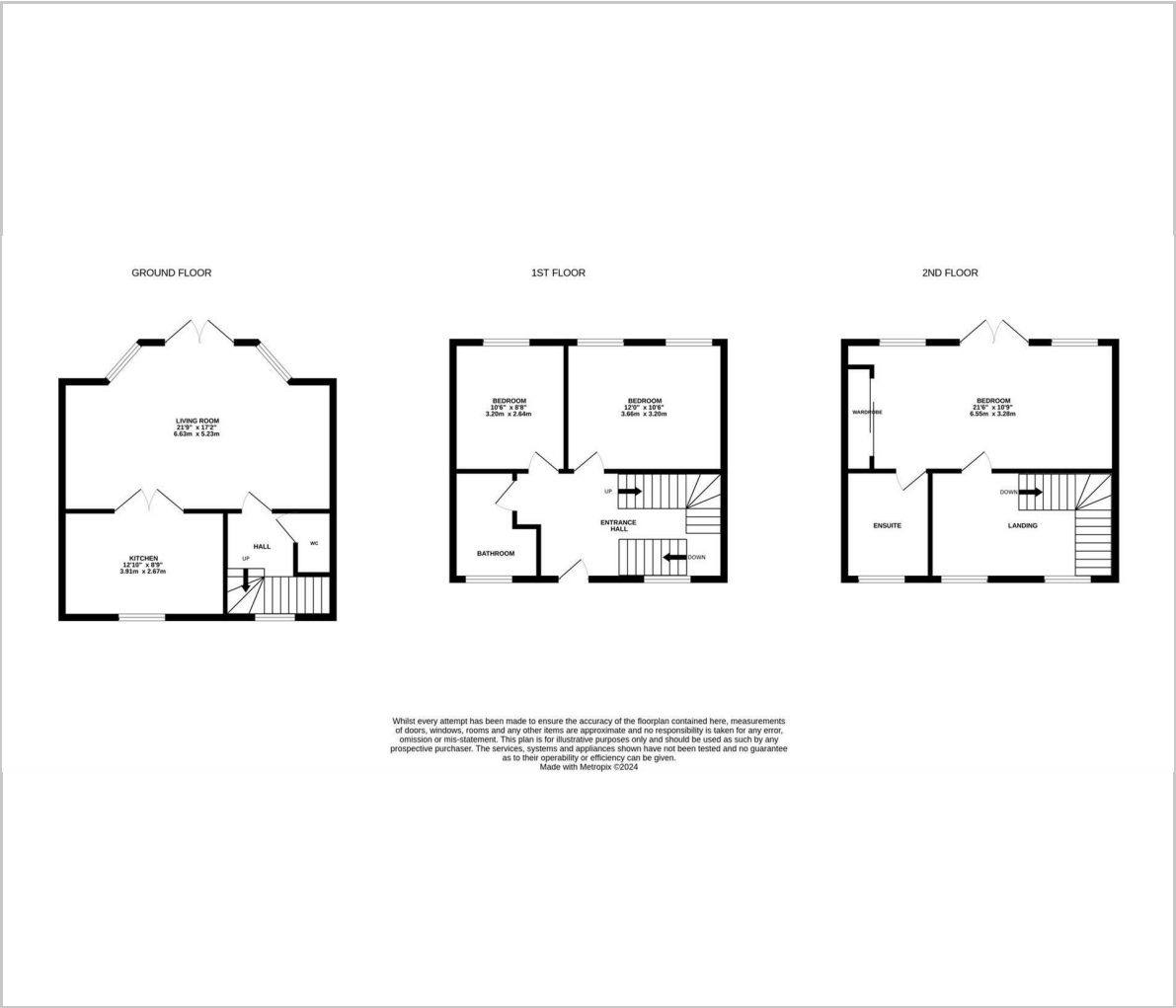
The property: a beautifully presented three bedroom house with off road parking and far reaching views. The accommodation is arranged over three floors offering spacious proportions, you enter on the ground floor where there are two bedrooms together with a family bathroom and the upper floor houses the main bedroom which enjoys double doors opening to a Juliet balcony and a stylish en-suite shower room. The main living space is positioned on the lower floor with access to the modern fitted kitchen with integrated appliances, a useful downstairs cloakroom and double doors opening to the enclosed rear garden. There are additional communal gardens for the use of the residents and an allocated off road parking space. Available at the end of February.

The location: situated within a prestigious development on the cusp of Hastings Old Town and Clive Vale. It's enviably positioned jut a short walk from Hastings Country Park, the seafront and Hastings Old Town which offers a collection of independant shops, antique stores, restaurants and traditional pubs.





Floor Plan



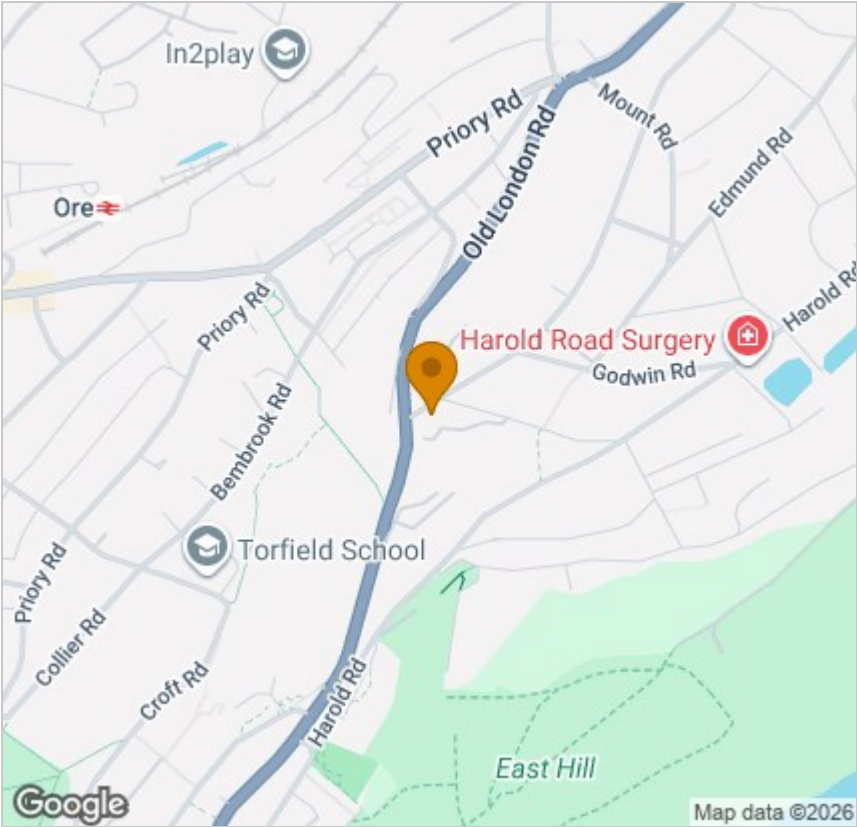
Viewing

Please contact our John Bray Hastings Sales Office on 01424 421544 if you wish to arrange a viewing appointment for this property or require further information.

These particulars, whilst believed to be accurate are set out as a general outline only for guidance and do not constitute any part of an offer or contract. Intending purchasers should not rely on them as statements of representation of fact, but must satisfy themselves by inspection or otherwise as to their accuracy. No person in this firms employment has the authority to make or give any representation or warranty in respect of the property.

72 High Street, Hasting, East Sussex, TN34 3EL
Tel: 01424 421544 Email: enquiries@johnbrayandsons.com www.johnbrayandsons.com

Area Map



Energy Efficiency Graph

